

# *Accelerating Access*

to Minimally Invasive Bunion Surgery



TREACE®

# For years, MIS bunion surgery has been a demanding procedure with a steep learning curve.

**Traditional MIS bunion techniques created as many challenges as they solved.**

Even experienced surgeons would admit: achieving and maintaining triplanar correction through a tiny incision was difficult. Without the right tools, surgeons often faced frustration from inconsistent results and inefficiencies in the OR.

## Common MIS Challenges\*

- ▶ **A steep learning curve** that limits adoption and confidence.
- ▶ **Manual correction** that makes consistent 3D alignment hard to control.
- ▶ **Implant prominence** (“metal bunion”) that causes soft tissue irritation.
- ▶ **Difficulty maintaining wire trajectory** due to skiving.
- ▶ **Loss of wire placement** during drilling, reducing accuracy.

\*Based on surgeon experience



Nanoplasty® 3D MIS Bunion Correction System

## We listened. We partnered. **We redefined MIS.**

Treace assembled a team of leading MIS surgeons to collaborate and overcome the limitations of traditional MIS bunion techniques. They created two intuitively instrumented systems addressing 3D bunion correction through a more accessible and predictable procedure, offering greater reproducibility and an improved experience for both surgeons and patients.



Left to right: Tyler A. Gonzalez, MD, A. Holly Johnson, MD, Jonathan Kaplan, MD, Brian Loder, DPM, Oliver Schipper, MD, and Ettore Vulcano, MD

## Our MIS Solutions

**Nanoplasty®**  
3D MIS Bunion Correction

**Percuplasty™**  
Percutaneous 3D Bunion Correction

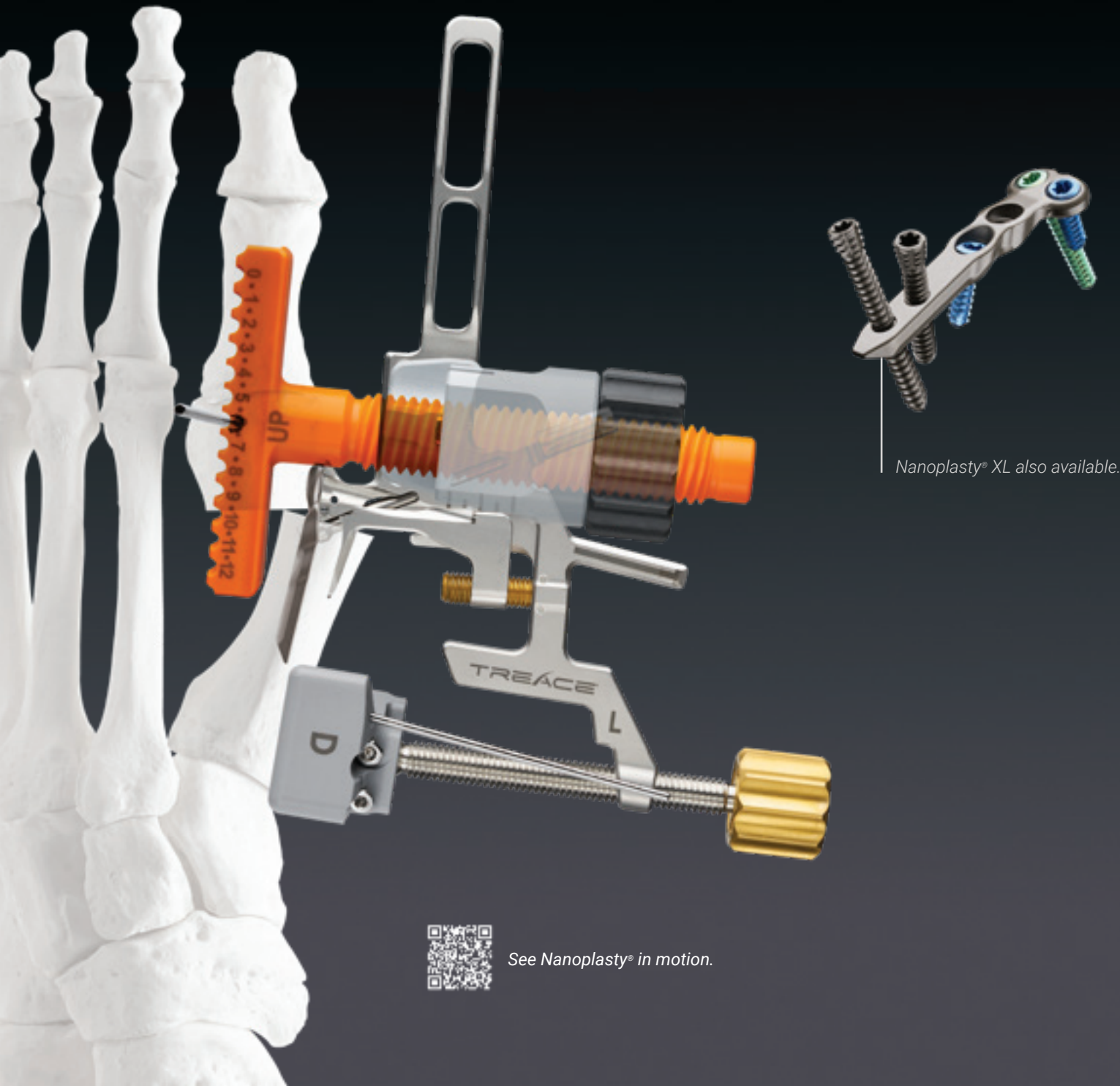
*The Nanoplasty® and Percuplasty™ systems are a game changer for surgeons seeking to engage the growing patient demand for **MIS osteotomy bunion surgery without the complexity and steep learning curve of the current MIS systems on the market.***

Jonathan Kaplan, MD

## Treace**Forward**

Advancing 3D bunion correction with surgeon-driven innovation and efficient, instrumented workflows.

# MiS<sup>3D</sup>™ without the steep learning curve.



Nanoplasty® XL also available.



See Nanoplasty® in motion.

## Nanoplasty® MiS<sup>3D</sup>™

3D MIS Bunion Correction

Nanoplasty® is the only fully instrumented bunion correction procedure in the U.S. delivering a predictable, minimally invasive 3D correction through a discreet 1.5 cm incision. Its guided saw-cut technique allows for quick mastery, eliminating the steep learning curve of traditional MIS.

✓ **Instrumented to dial in triplanar correction.**

Intuitive instrumentation enables a reproducible and stable hands-free 3D correction.

✓ **Confidence with a guided saw cut.**

MIS-compatible cut guide for a fast and precise osteotomy – without the burr.

✓ **Predictable strength of locking fixation.**

Ultra-low-profile plating system designed to support early weight bearing\* and foot width reduction.

\*TMC data on file



Pre-Op



Immediate Post-Op



6 Months Post-Op

Construct shown is at the surgeon's discretion.

## NanoRasp™

MIS Contouring Tool

Designed for efficient removal of the medial spike to help narrow the foot.



### 1 Cut.

Precision guided cut with a small sagittal saw. (1.5 cm incision)



### 2 Insert.

Insert the implant & stabilize guide to hold the initial shift.



### 3 Correct.

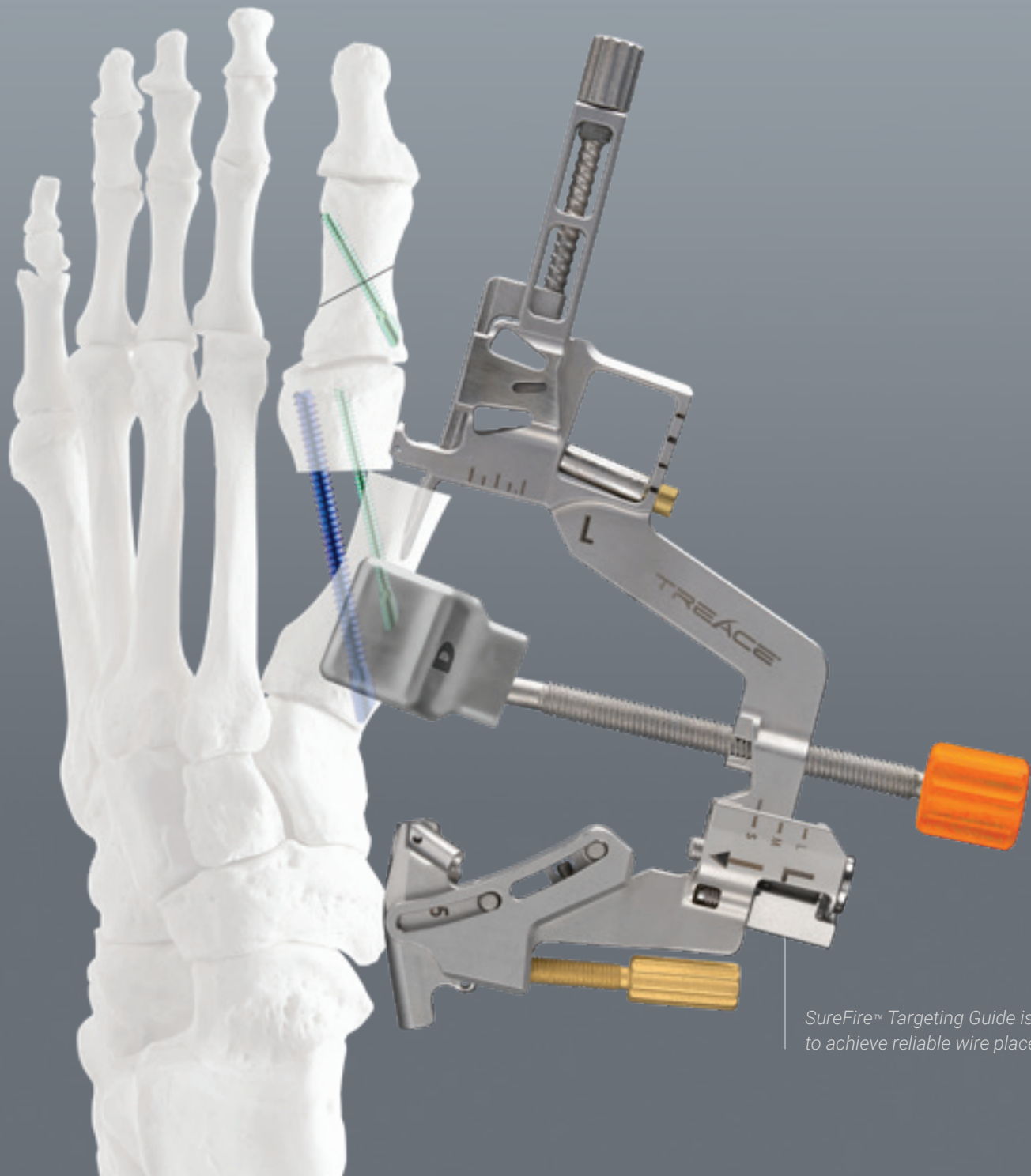
Perform rotational correction & dial in the shift.



### 4 Fixate.

Apply guided, locking fixation to secure the correction.

# Mis<sup>3D™</sup> that delivers control and efficiency.



SureFire™ Targeting Guide is designed to achieve reliable wire placement.

## Percuplasty™ Mis<sup>3D™</sup>

Percutaneous 3D Bunion Correction

Designed to address traditional challenges of percutaneous bunion surgery by enabling greater speed, efficiency, and precision.

✓ **Precise 3D correction and targeting.**

Ultra-low-profile jig allows optimal visualization of the metatarsal in the lateral x-ray, dialing in triplanar correction, and accurate wire placement.

✓ **Throw wires without skiving.**

Robust 1.4 and 1.6 mm cobalt chrome wires with a laser-sharp tip are designed to reduce skiving.

✓ **Rapid screw insertion.**

Self-drilling beveled screws simplify the workflow and save valuable time in the OR.



Pre-Op



6 Weeks Post-Op



3 Months Post-Op

*Construct shown is at the surgeon's discretion.*



### MIS Instrument Pack

Pre-packaged, sterile, ready to use and always sharp.

### MIS Power System†

High-torque, low-speed power system optimized for percutaneous burr use.



1

### Cut.

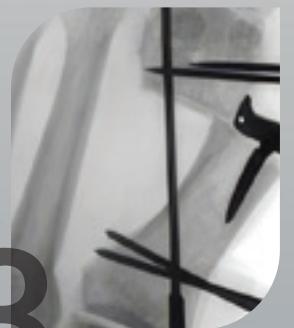
Perform osteotomy with burr or small saw.



2

### Correct.

Perform comprehensive triplanar deformity correction.



3

### Target.

Accurately direct K-wires in desired location.



4

### Fixate.

Rapidly apply self-drilling screws.

BunionMasters™

# Learn. Lead. Advance the standard.

Treace offers unmatched opportunities for surgeon education. From introductory courses and cadaveric labs to advanced BunionMasters™ events and on-site training, every program is designed to give you hands-on experience and peer-to-peer connection.



We're helping millions of patients move forward with the care they need by building smarter surgical solutions that help patients recover faster and easier and help surgeons operate with greater precision.

Treace**Forward**

## **MIS**<sup>3D™</sup> 3D MIS Bunion Correction Systems Minimally Invasive Systems Ordering Information

### Nanoplasty® 3D MIS Bunion Correction

#### Implants

SK57	Nanoplasty® Implant Kit
SK67	Nanoplasty® XL Implant Kit
SD29	Nanoplasty® Bicortical Screw Pack
SD32	Nanoplasty XL Bicortical Screw Pack

#### Instruments

SM-3155 / ZMS-3155	Nanoplasty® Saw Blade
SN36	NanoRasp™ MIS Countouring Tool (SM)
SN37	NanoRasp™ MIS Countouring Tool (ZMS)

#### MIS Power System

NK34	Percuplasty™ MIS Power System
F12	MIS Power Usage Fee

### Percuplasty™ Percutaneous 3D Bunion Correction

#### Implants

SF30XX	3.0 mm Beveled Screws (XX = Length, Available from 18 - 50 mm in 2 mm increments)
SF40XX	4.0 mm Beveled Screws (XX = Length, Available from 24 - 64 mm in 2 mm increments)

#### Correction Pin

02-00332	3.5 mm Correction Pin
02-00333	5.0 mm Correction Pin

#### Burrs

TM12008	2.0 mm x 8.0 mm Shannon Burr
TM12013	2.0 mm x 13.0 mm Shannon Burr
TM12220	2.2 mm x 20.0 mm Shannon Burr
TM22913	3.0 mm Wedge Burr
TM14313	4.0 mm Wedge Burr
TM13030	3.0 x 30.0 mm Shannon Burr
TM13120	3.1 x 20.0 mm Shannon Burr

#### MIS Sterile Packs

SN33	Percuplasty™ MIS Guide Wire Pack
SN35	MIS Instrument Pack
SN45	Percuplasty™ 1.4 x 152 mm Wire
SN46	Percuplasty™ 1.6 x 152 mm Wire
SN47	Percuplasty™ 1.4 x 178 mm Wire
SN48	Percuplasty™ 1.6 x 178 mm Wire



To learn more, visit [Treace.com](http://Treace.com)

**TREACE**<sup>®</sup>  
Medical Concepts, Inc.

\* Distributor: **TREACE** Manufacturer: **Aseptica**

Risks of the MIS Power System include, but are not limited to: potential injury and property damage due to improper use or improper preparation and maintenance of this product. Additional information about risks, warnings, and instructions can be made available by Treace Medical Concepts, Inc. at 904-373-5940 or [cs@treace.net](mailto:cs@treace.net).

Before use of the system, the surgeon should refer to the appropriate instructions for use and surgical technique for complete warnings, precautions, indications, contraindications, and adverse events. Risks include, but are not limited to: infection, discomfort from the presence of the implant, loosening of the implant, and loss of correction with nonunion or malunion. If any of these occur, additional treatments may be needed. Additional information about risks, warnings, and instructions is available at [Lapiplasty.com/surgeons/labeling](http://Lapiplasty.com/surgeons/labeling).

Pat. [treace.com/patents](http://treace.com/patents) ©2026 Treace Medical Concepts, Inc. All rights reserved. M4065B